



APPLICATIONS CONTRIBUTING TO THE CUMULATIVE IMPACT IN NAVENBY AREA

To
Springwellsolarfarm@planninginspectorate.gov.uk

From Cllr Marianne Overton MBE [REDACTED]
[REDACTED]

Chairman of the Navenby Solar Action Group
As requested by the Inspector at the Springwell Inquiry

Reference: <https://national-infrastructure->

Introduction

At the Springwell Inquiry at the Assembly Rooms in Lincoln, the area of potential impact was very limited. I raised the point that we have very open countryside so that impacts are very far-reaching. The Inspector asked me to submit my point in writing.

Rural open landscape

The landscape has the Cliff Edge running roughly north-south from north of Lincoln to Grantham. It is part of the long limestone ridge that runs right through Lincolnshire.

To the West, the ridge affords long, wide open vistas from the Cliff Villages 50 miles right across to the Peak District. Taking an arc of the visibility is around a thousand square miles.

In planning, we have long protected our rural landscape against new industrial developments in the open countryside. In the Central Lincolnshire Local Plan we are well supplied with industrial land for development.

Looking East from the Cliff Edge, the very gently rolling well drained heathland provides some of the best farmland in the country, with Lincolnshire winning the record for the highest yields in the country. As a country, we rely on the heathland for fundamental food, especially when the clay lowland is too wet, or the fens inundated with water.

East of the heathland, from Digby the land drops to the fens, a very flat area overlooked from the heath and indeed from the whole of the heathland ridge. Hence Lincoln Cathedral and the Boston Stump view each other across some 30 miles of open landscape.

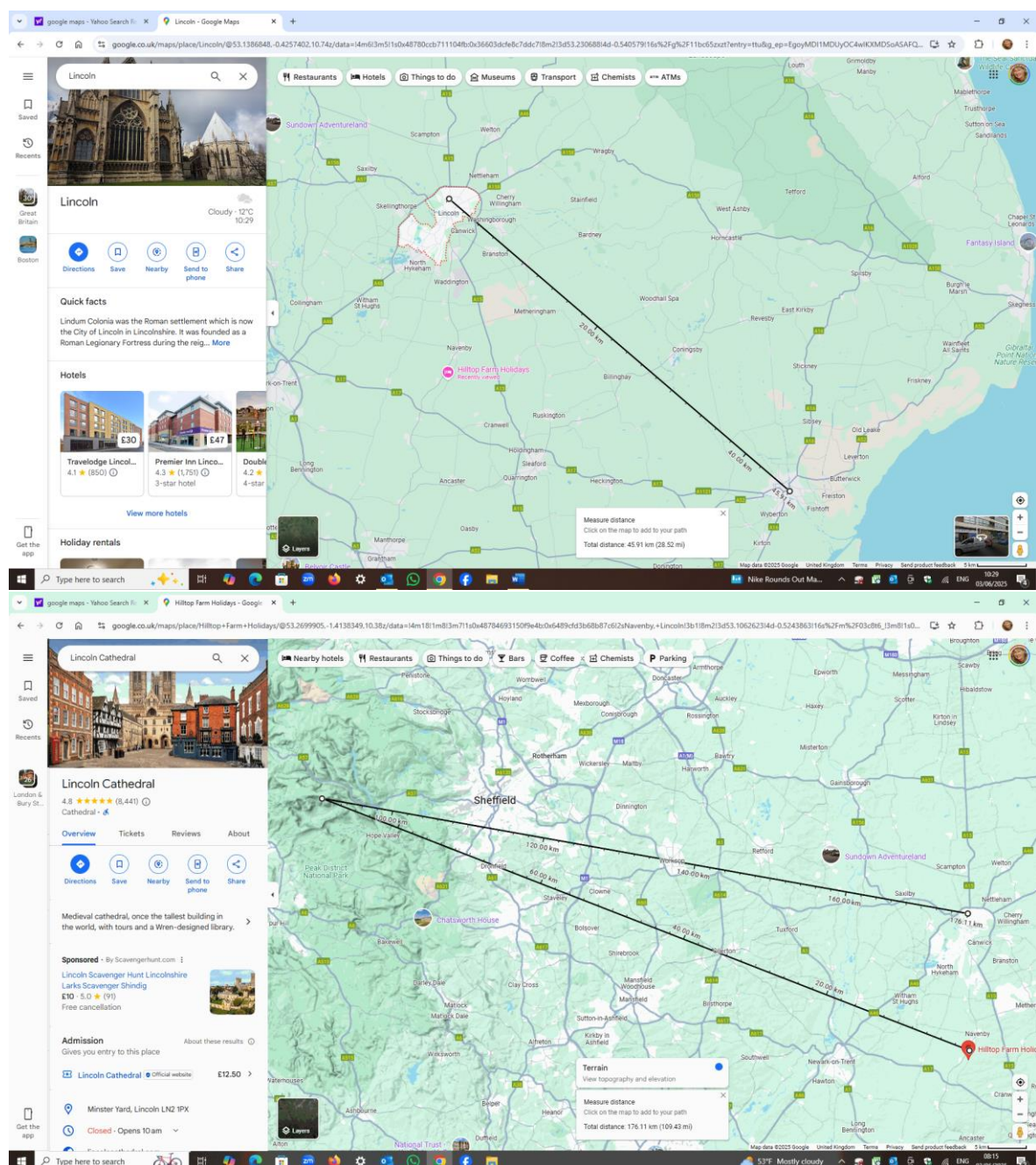
Alien features destroy the nature of our rural landscape

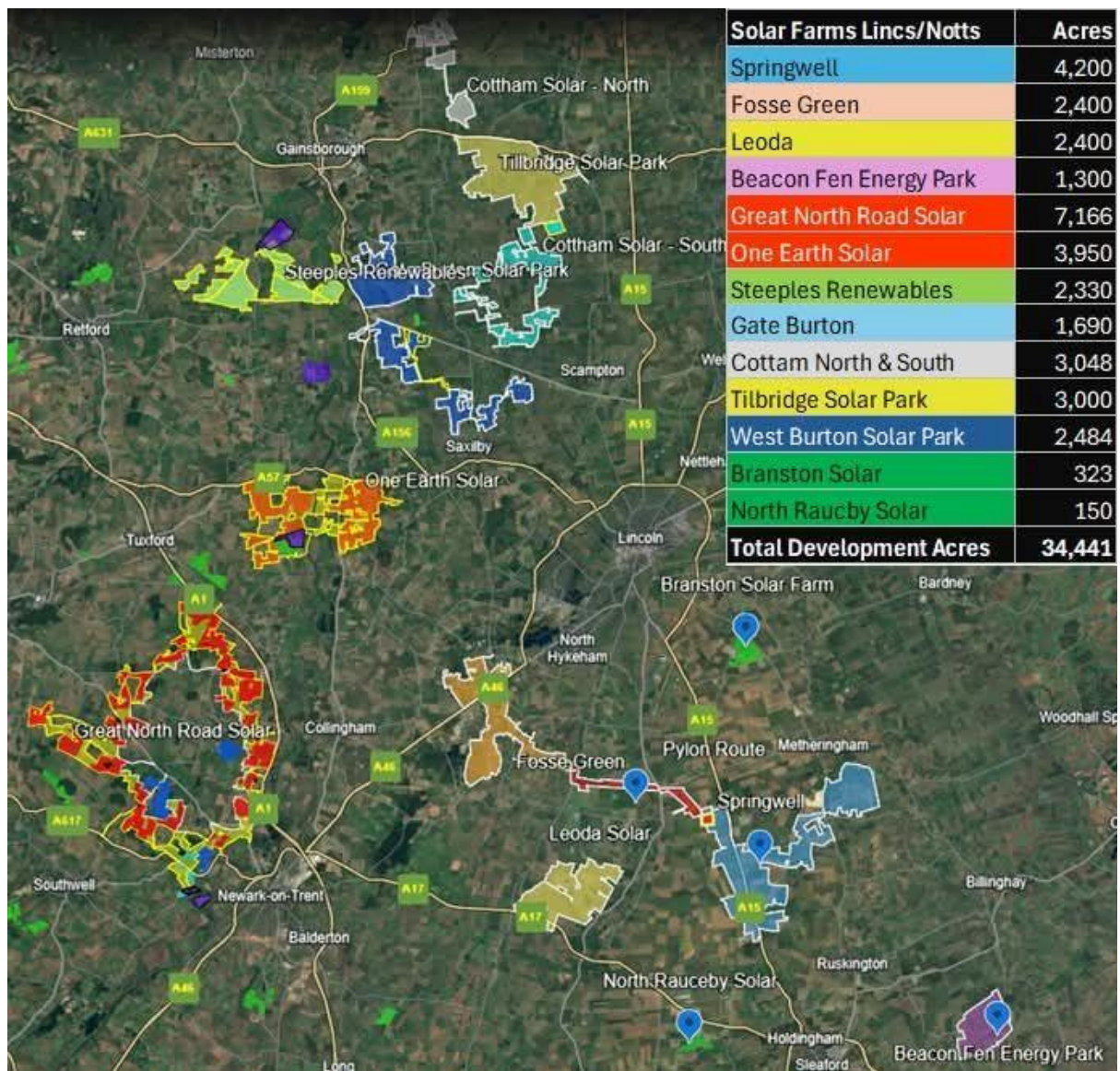
Because the land is so open, alien industrial features draw the eye and appear extremely prominent in the landscape. The perceived nature of our rural landscape is thus spoiled. The impact is far greater than the footprint.

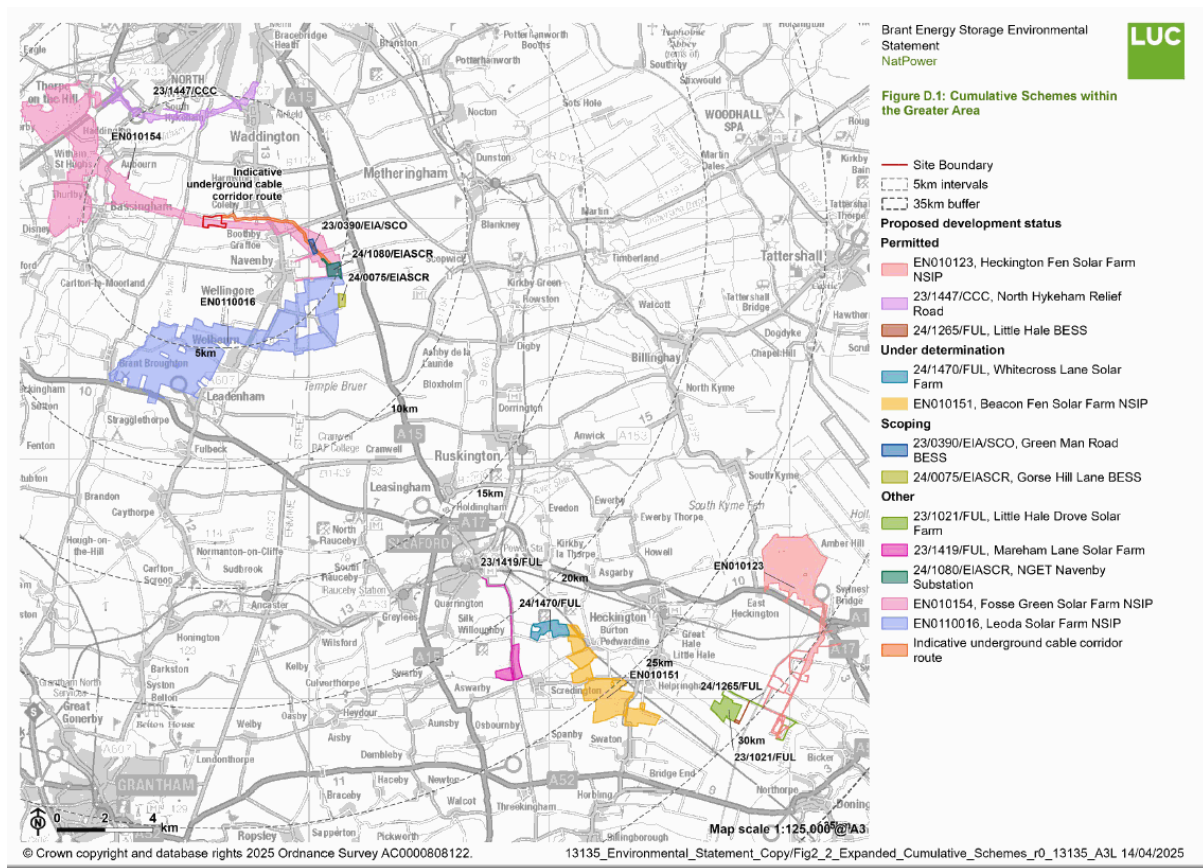
The character of our landscape is one of traditional villages set in lovely rural countryside. This changes the very nature to one of industrial development and sets a precedent for more, permanently damaging our heritage. The buildings, batteries and infrastructure cannot be said to be temporary. They are all connected as one. Significant and irreparable harm to the rural character of the area, replacing attractive countryside areas and agricultural land with alien materials such as concrete, steel and glass on a huge scale.

All the applications should be considered together in order to properly consider their cumulative impact. I have extracted the applications in this central part of rural North Kesteven from the Council website. Government guidance is clear that renewable energy developers should utilise brownfield, industrial, contaminated or previously developed land, and that where development on agricultural land is necessary, lower-quality land should be used in preference to high quality. All the currently proposed renewable energy infrastructure in the area is entirely on agricultural land, much of which is high quality BMV agricultural land.

On this scale, this application is contrary to all our local planning policies, severely impacting on the very nature of this particular open landscape and should be refused.







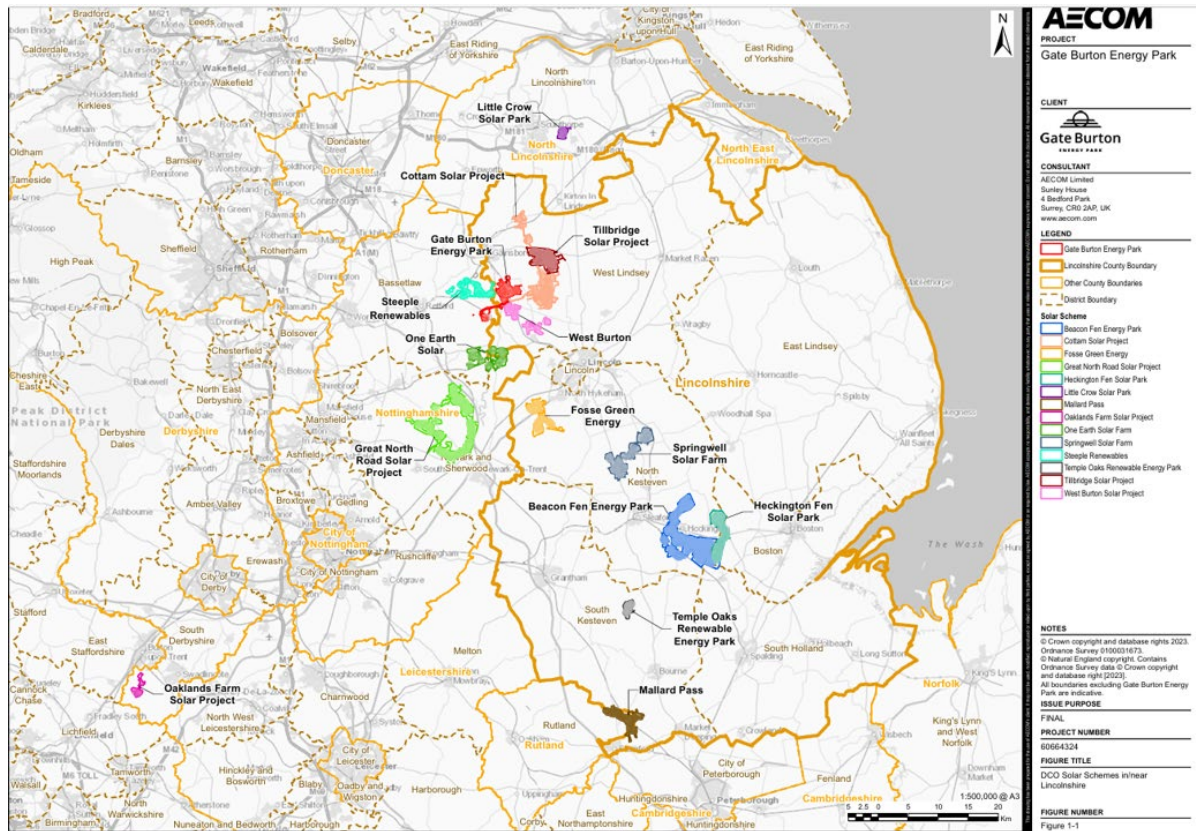
Appendix 1 List of Applications into National Grid , just for our area.

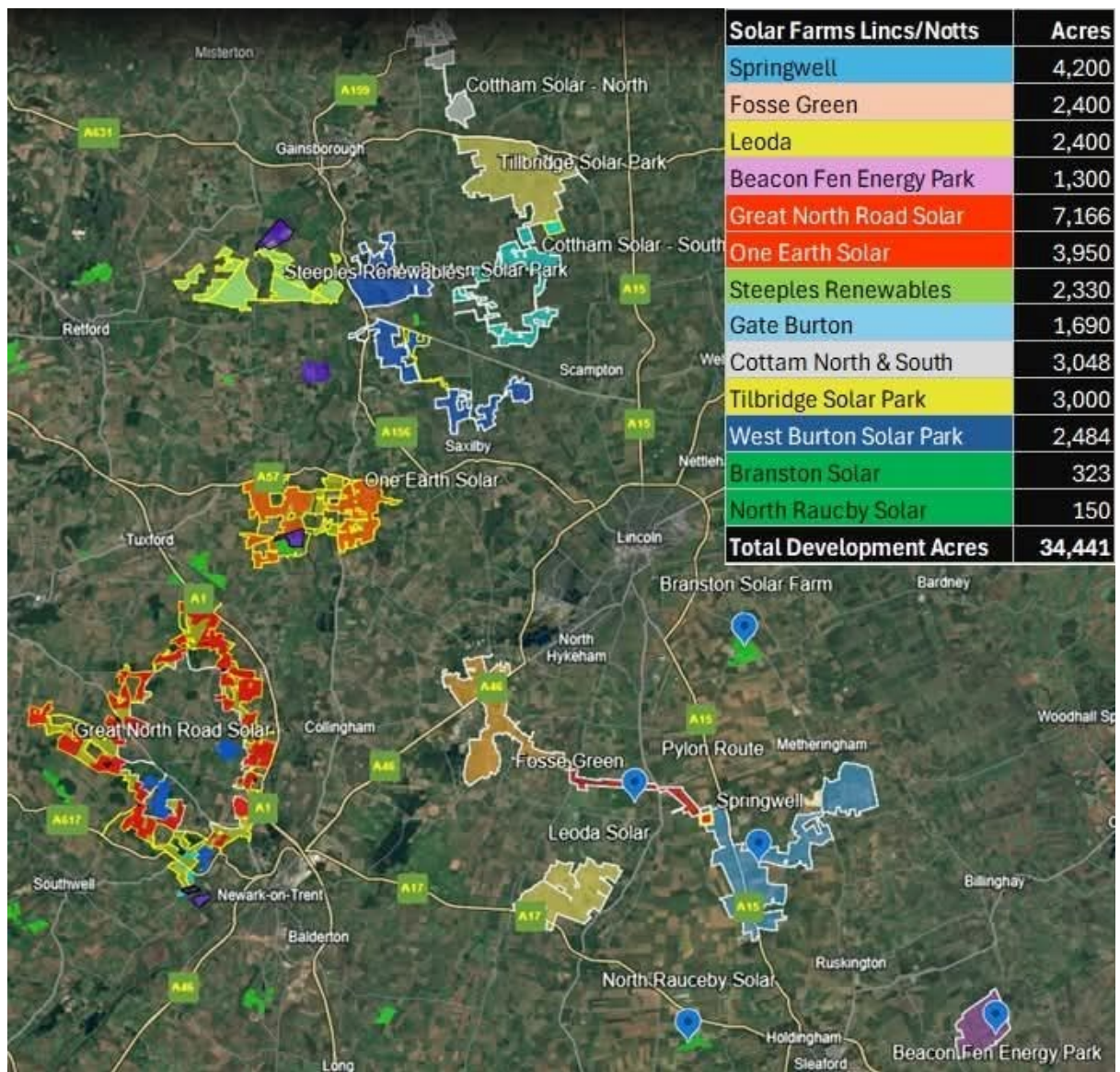
List of Connection requests – apart from Bicker Drove, all within a few miles

tec-register-28-february-2025

Project Name	Customer Name	Stage	MW	MW Effective From	Project Status	Plant Type	Project Number
Bicker Drove	REWE 1 LIMITED		400	2034/05/30	Scoping	Energy Storage System	PR0-003874
Cliff Hill Energy Farm	Renewable Energy Systems Limited		800	2034/10/30	Scoping	Energy Storage System;PV Array (Photo Voltaic)	PR0-003896
Cranwell Solar & BESS Farm	TRO POWER LIMITED		300	2034/10/30	Scoping	Energy Storage System;PV Array (Photo Voltaic)	PR0-003952
Ewerby	BSE EWERBY SOLAR LIMITED		500	2029/10/30	Scoping	Energy Storage System;PV Array (Photo Voltaic)	PR0-003957
Housham PV & BESS	FOSSE GREEN ENERGY LIMITED		240	2033/05/30	Scoping	Energy Storage System;PV Array (Photo Voltaic)	PR0-003958
NatPower Navenby Energy Park	NAVENBY ENERGY LIMITED		1030	2034/10/30	Scoping	Energy Storage System	PR0-003959
Navenby GEC (Ethos Green)	NAVENBY GREEN ENERGY CENTRE LTD		580	2033/10/30	Awaiting Consents	Demand;Energy Storage System;PV Array (Photo Voltaic)	PR0-003960
Springwell	SPRINGWELL ENERGYFARM LIMITED	1	400	2028/04/01	Scoping	Energy Storage System;PV Array (Photo Voltaic)	PR0-001850-1
Springwell	SPRINGWELL ENERGYFARM LIMITED	2	400	2030/04/01	Scoping	Energy Storage System;PV Array (Photo Voltaic/solar)	PR0-001850-2

Appendix 2 List of Applications at NKDC Landscape so attached separately





Nationally Significant Infrastructure Project (NSIP) schemes

Description	Address	Application type & decision maker	Status (January 2025)	Reference no.	Notes/more info including grid connection and site area
Heckington Fen Solar Park - Erection of 500MW generating capacity solar farm and associated infrastructure including battery storage, substations, inverters and cable connection to Bicker Fen substation	Land At Six Hundreds Farmhouse, Six Hundreds Drove, East Heckington, Sleaford	NSIP - Secretary of State for Energy Security and Net Zero	Decided	EN010123	Site area – 586.85 hectares
Springwell Solar Farm - Erection of 800MW Solar Farm with battery storage, substation and associated infrastructure	Between Blankney, B1188, Scopwick, Ashby De La Launde, RAF Digby, B1191, A15 And Temple Bruer Parish	NSIP – Secretary of State for Energy Security and Net Zero	Pre-examination	EN010149	Site area – 1971.45 hectares
Fosse Green Energy Solar Park - Installation of solar (PV) generating panels and on-site Battery Energy Storage System (BESS and associated infrastructure with electrical generation capacity of 320 to 350 megawatts (MW) with storage capacity anticipated at 480 megawatt hours along with grid connection and associated infrastructure	9 Kilometres(km) South-west Of Lincoln Near Thorpe On The Hill, Morton, Witham St Hughs, Haddington, Thurlby, Norton Disney And Bassingham	NSIP - Secretary of State for Energy Security and Net Zero	Pre-application	EN010154	Site area – approximately 1000 hectares
Beacon Fen Energy Park - Erection of 600MW Solar Farm with battery storage system, grid connection and associated infrastructure	Land North Of Heckington And Between Screddington And Helpringham	NSIP - Secretary of State for Energy Security and Net Zero	Pre-application	EN010151	Total site area – 517 hectares

LEODA Leadenham Solar Farm – Erection of solar farm with generating capacity of between 500 and 600 megawatts (MW) with battery storage and associated infrastructure	Land Northwest of Leadenham	NSIP - Secretary of State for Energy Security and Net Zero	Pre-application	Not yet assigned	Total site area – 971 hectares
--	-----------------------------	--	-----------------	------------------	--------------------------------

TCPA 1990 – NKDC Solar and Energy Schemes (over 5MW generating capacity)

Description	Address	Application type & decision maker	Status (January 2025)	Reference no.	Notes/more info including grid connection and site area
Installation of solar farm (up to 15MW capacity), plus associated infrastructure	Land At Grange Farm, Asgarby Road, Burton Pedwardine	TCPA 1990 – NKDC	Approved - Complete	12/1242/FUL	Site area – 28.91 hectares
Installation and operation of a solar farm (29.6MW capacity) and associated infrastructure	Ermine Street Farm, Ancaster Heath	TCPA 1990 – NKDC	Approved - Complete	13/0929/FUL	Site area – 67.47 hectares
Installation of ground mounted photovoltaic solar arrays to provide a 15MW generating capacity	Land Between Mere Road And Sleaford Road, Branston LN4 1NJ	TCPA 1990 – NKDC	Approved - Complete	14/0672/FUL	Site area – 37.40 hectares
Development of a solar photovoltaic power generating installation of up to 49.95MW with associated 132kv substation	Land North East Of Scopwick And West Of Railway Line (Blankney Estate)	TCPA 1990 – NKDC	Approved – Lawfully commenced, incomplete	14/0937/FUL & 21/1024/LDEXI	Site area – 93 hectares
Construction and operation of a solar park (8MW)	Deepdale Farm, Leasingham Moor, Sleaford, NG34 8SH	TCPA 1990 – NKDC	Approved - Complete	14/0952/FUL	Site area – 19.70 hectares
Installation of an array of photovoltaic solar panels with a maximum output of up to 28MW for 30 years	Land Associated With Ewerby Thorpe Farm, Ewerby Thorpe NG34 9PR	TCPA 1990 – NKDC	Approved – Consent lapsed	14/1003/FUL	Site area – 53.90 hectares

Appendix 2 NKDC Solar and Energy Infrastructure Schemes (over 5MW)

January 2025

Installation of solar park (49.9MW capacity), accesses and associated infrastructure	Land Between Mere Road And Sleaford Road, Branston LN4 1NJ	TCPA 1990 – NKDC	Approved - Complete	17/1546/FUL	Site area – 97 hectares
Erection of Solar PV park (circa 20MW electricity generating capacity)	Land South Of Gorse Lane, Silk Willoughby	TCPA 1990 – NKDC	Approved - Complete	19/0060/FUL	Site area – 67.59 hectares
Proposed solar farm (32MW) and associated development including substation	Land To The North Of White Cross Lane, Burton Gorse, Sleaford	TCPA 1990 – NKDC	Approved - Complete	19/0863/FUL	Site area – 50.3 hectares
Mareham Lane Solar Farm (49.9MW capacity)	Eastern And Western Side Of Mareham Lane Between The Villages Of Screddington And Silk Willoughby	TCPA 1990 – NKDC	Application submitted – pending decision	23/1419/FUL	Site area – 75.91 hectares None Connection to Sleaford Substation (Mareham Lane)
Little Hale Fen - Development of a photovoltaic solar array (49.995MW export capacity) with associated grid corridor works, access improvements and ancillary development	Land South Of Little Hale Drove Little Hale Fen	TCPA 1990 – NKDC	Refused	23/1021/FUL	Site area – 86.12 hectares
Little Hale Drove Battery Energy Storage System (BESS) (99MW)	The South Of Little Hale Drove Little Hale Fen	TCPA 1990 – NKDC	Application submitted – pending decision	24/1265/FUL	Site area – 2.8 hectares EIA screening opinion issued - 24/0311/EIASCRC Connection to 400kv overhead line – Bicker Fen
Gorse Hill BESS (Navenby Heath) (240MW)	Gorse Hill Lane Wellingore Lincolnshire LN5 0BY	TCPA 1990 – NKDC	EIA screening opinion issued – no planning application submitted	24/0075/EIASCRC	Site area – 14 hectares Connection to 400kv overhead line – Navenby Heath

Appendix 2 NKDC Solar and Energy Infrastructure Schemes (over 5MW)

January 2025

Green Man Road BESS (Navenby Heath) (400MW)	South of Green Man Road Navenby Lincolnshire	TCPA 1990 – NKDC	EIA screening and scoping opinions issued – no planning application submitted	23/0584/EIASCRC & 23/0390/EIASCRC	Site area – 11.8 hectares (5 hectares of development area) Revised location – now south of Green Man Road Connection to 400kv overhead line – Navenby Heath
Erection of new 400kv Air Insulated Switchgear (AIS) substation and associated development	Land Off Heath Lane Navenby Lincoln	TCPA 1990 – NKDC (substation) and section 37 of the Electricity Act 1989 (overhead line consent)	EIA screening opinion issued, EIA scoping request expected	24/1080/EIASCRC	Site area – 37.1 hectares National Grid Navenby Heath Substation – proposed connection for Springwell and Fosse Green solar farms
Burton Gorse Plantation solar farm (63 MW)	Adjacent Burton Gorse Plantation North Of Whitecross Lane Burton Pedwardine	TCPA 1990 – NKDC	EIA screening opinion issued, planning application submitted (awaiting validation)	24/1041/EIASCRC 24/1470/FUL (awaiting validation)	Site area – 76 hectares None
January to May 2025					
Installation of a ground-mounted solar farm with associated works	Land North of Ferry Lane North-East of Skellingthorpe & West of Burton Waters Lincolnshire		Validated 08.05.25	25/0521/FUL	34.78ha
Installation of a solar farm comprising ground mounted solar PV panels with an installed capacity of c.42MW AC and associated development including mounting system, associated infrastructure (switchgear building, inverters, substation)	Land To The North Of Whitecross Lane Burton Pedwardine Sleaford Lincolnshire NG34 0BN		Validated 26.03.25	24/1470/FUL	76.1ha

compound, equipment storage / comms containers, access tracks, culverted watercourse crossing, fencing/ gates, CCTV cameras), 15m communications mast					
Proposed battery energy storage system (BESS) together with associated infrastructure, engineering works and landscaping	Land To The South Of Hill Rise West Of Coleby And North Of Navenby Lincolnshire		Validated 15.05.25	25/0533/FUL	34.5ha
Battery Energy Storage System (BESS) and associated infrastructure	Land To The South Of Green Man Road Navenby LN5 0AY		09 May 2025	25/0491/FUL	22.06ha